



## Victoria Mill, Houldsworth Street, Reddish, Stockport

£875 PCM

If you're looking for a home full of charm and character, this stunning one-bedroom duplex apartment within an award-winning Victorian mill conversion is not to be missed. Set across two floors, the property offers a unique sense of space with a bright open plan living and kitchen area, complemented by large feature windows that flood the home with natural light. The apartment comes fully furnished, ready to move straight into.

Designed for modern living, the development benefits from excellent transport links, with the train station just 0.4 miles away – an easy 8-minute walk – ideal for commuting into Stockport, Manchester city centre and surrounding areas.

Aside from stunning views across the Manchester skyline, tenants benefit from an abundance of amenities. A friendly 24-hour concierge, dedicated bike storage, elevator to all floors (to save your legs), and a secure entry system are just a few of the key USPs of this beautiful development. There's also an on-site gym - a huge bonus for those 'leg days' where it's a mission just to get home!

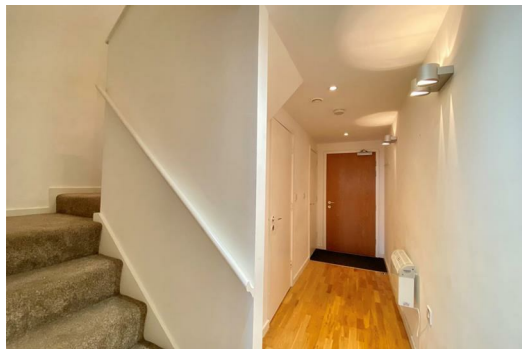
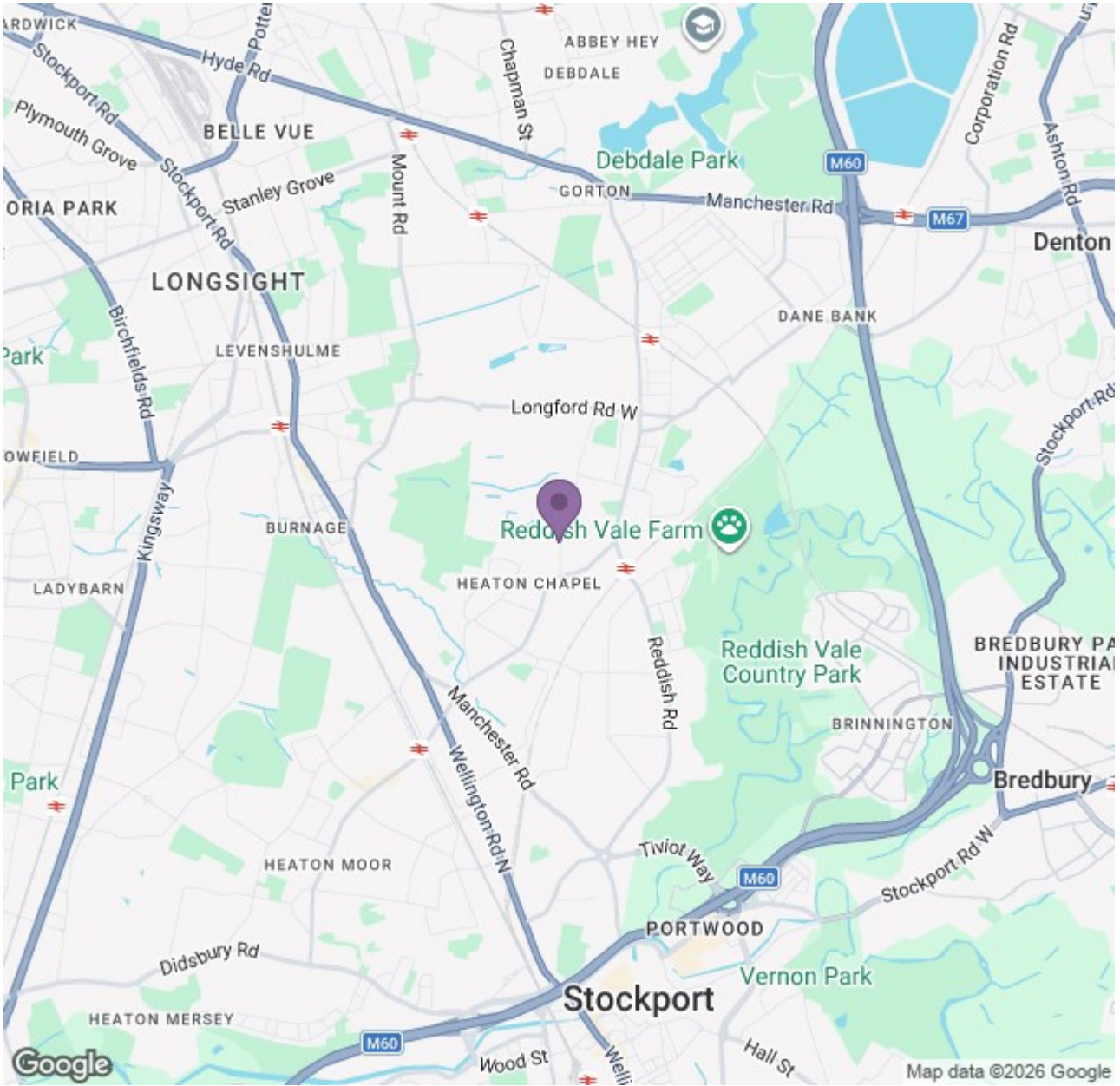
This property really needs to be seen to be appreciated. Each apartment within this conversion is different, with its own individual charm. With secure private parking and more facilities than you can shake a stick at, there's not much more you could want in a property. This apartment won't be around for long so we recommend an early viewing to avoid disappointment.

\*Marketing images have been used for this advertisement. Furnishings may vary.



# Ascend

Built on higher standards



Energy Efficiency Rating		Environmental Impact (CO <sub>2</sub> ) Rating	
Current	Target	Current	Target
76	87	76	78

England & Wales

# Ascend

Built on higher standards